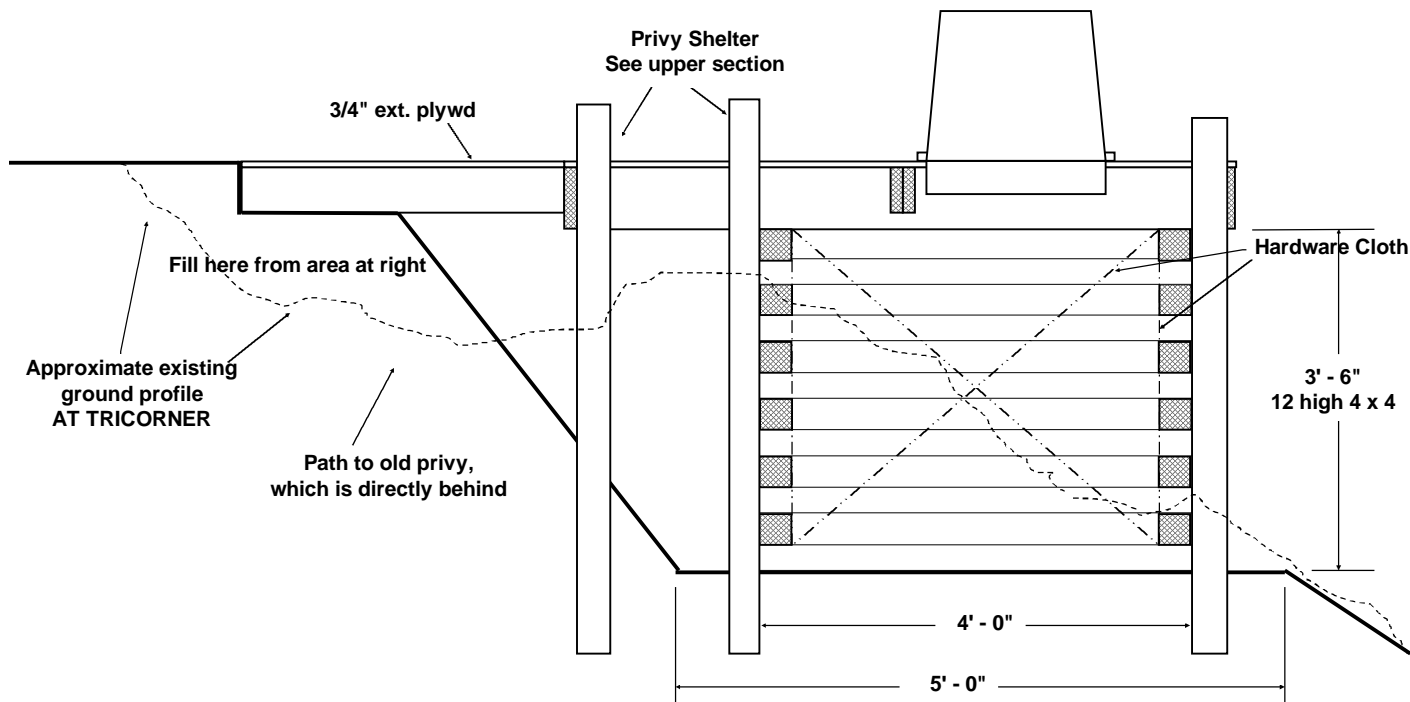
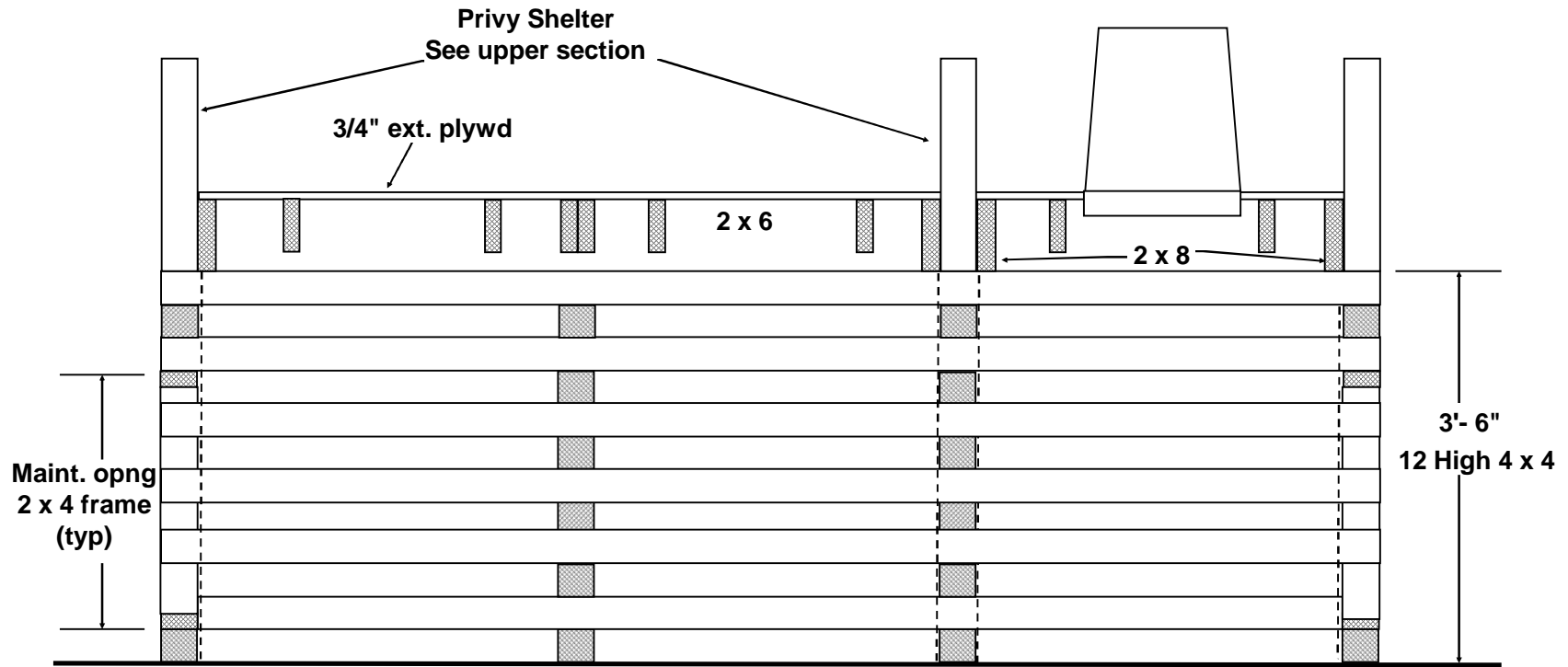


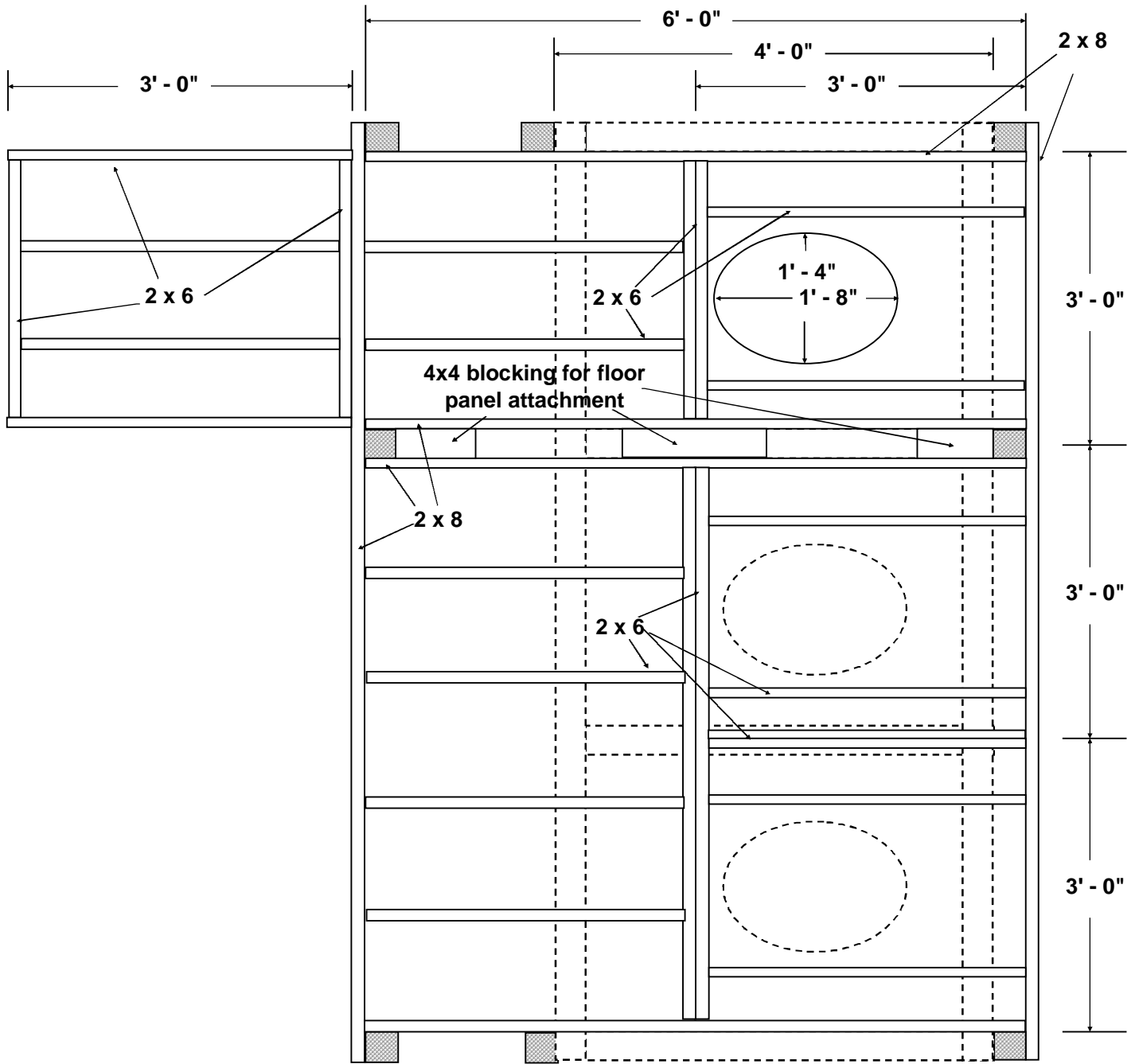
Lower Plan



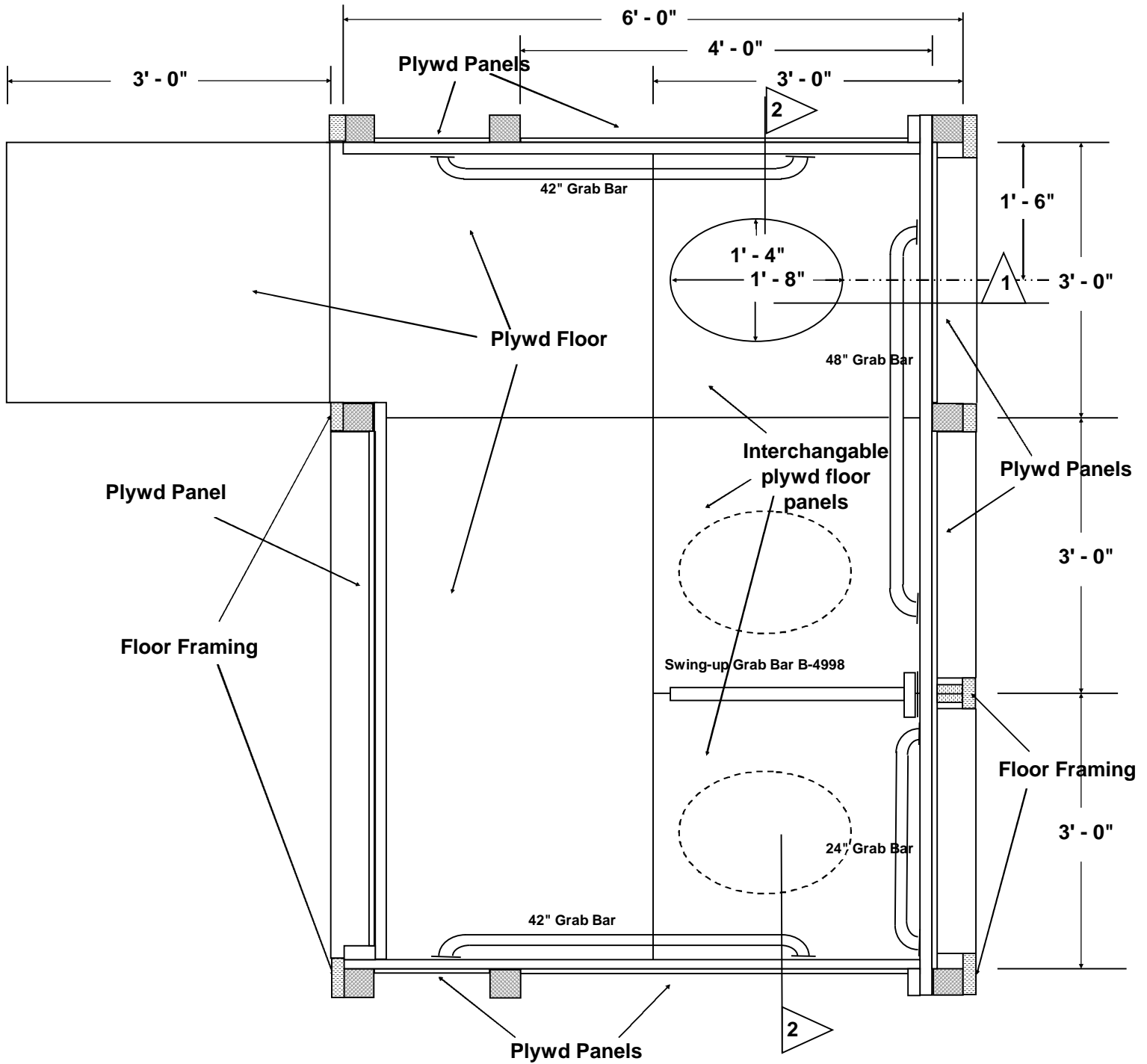
Lower Section 1



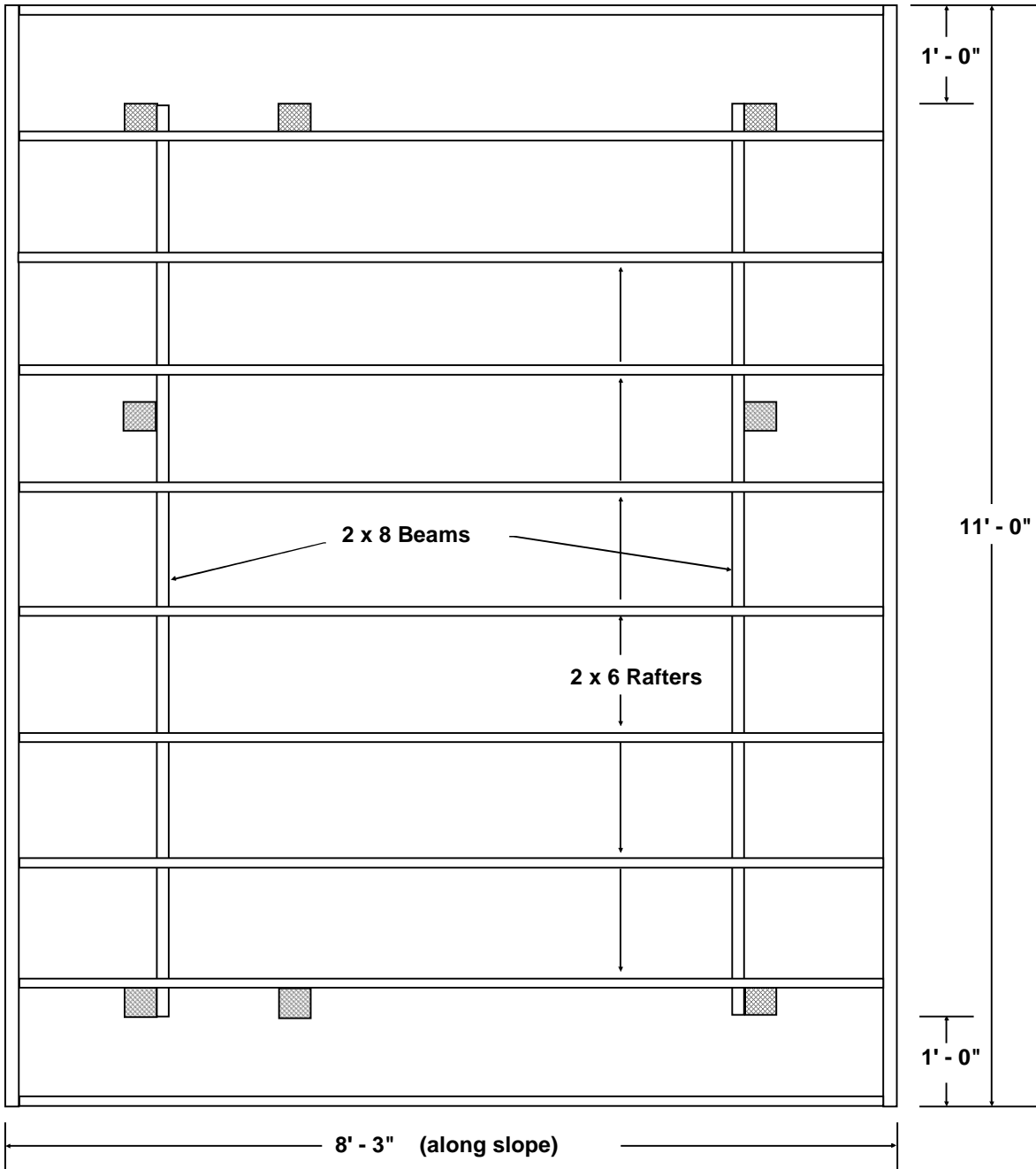
**Lower Section 2**



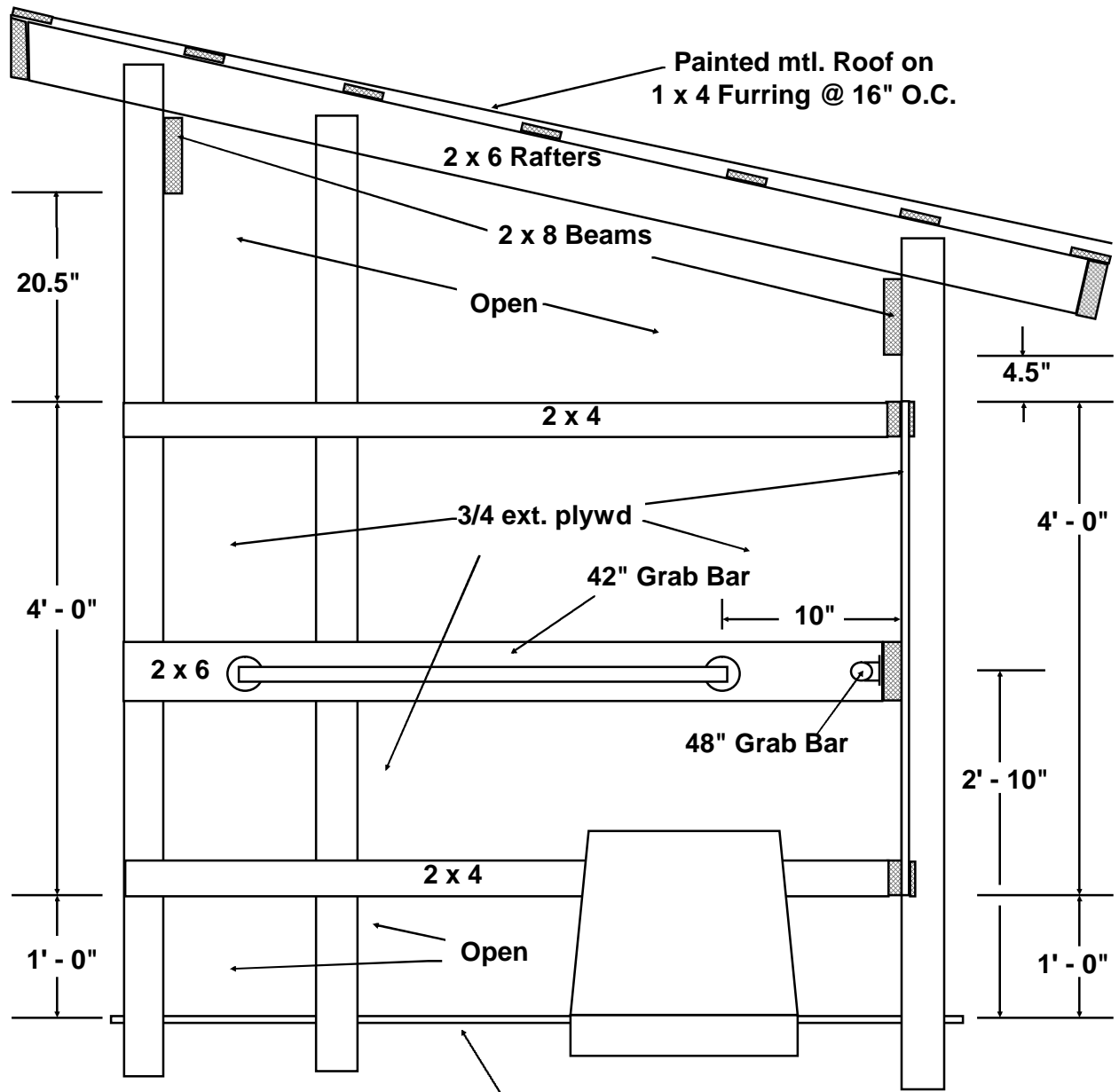
**Floor Framing**



**Floor Plan**

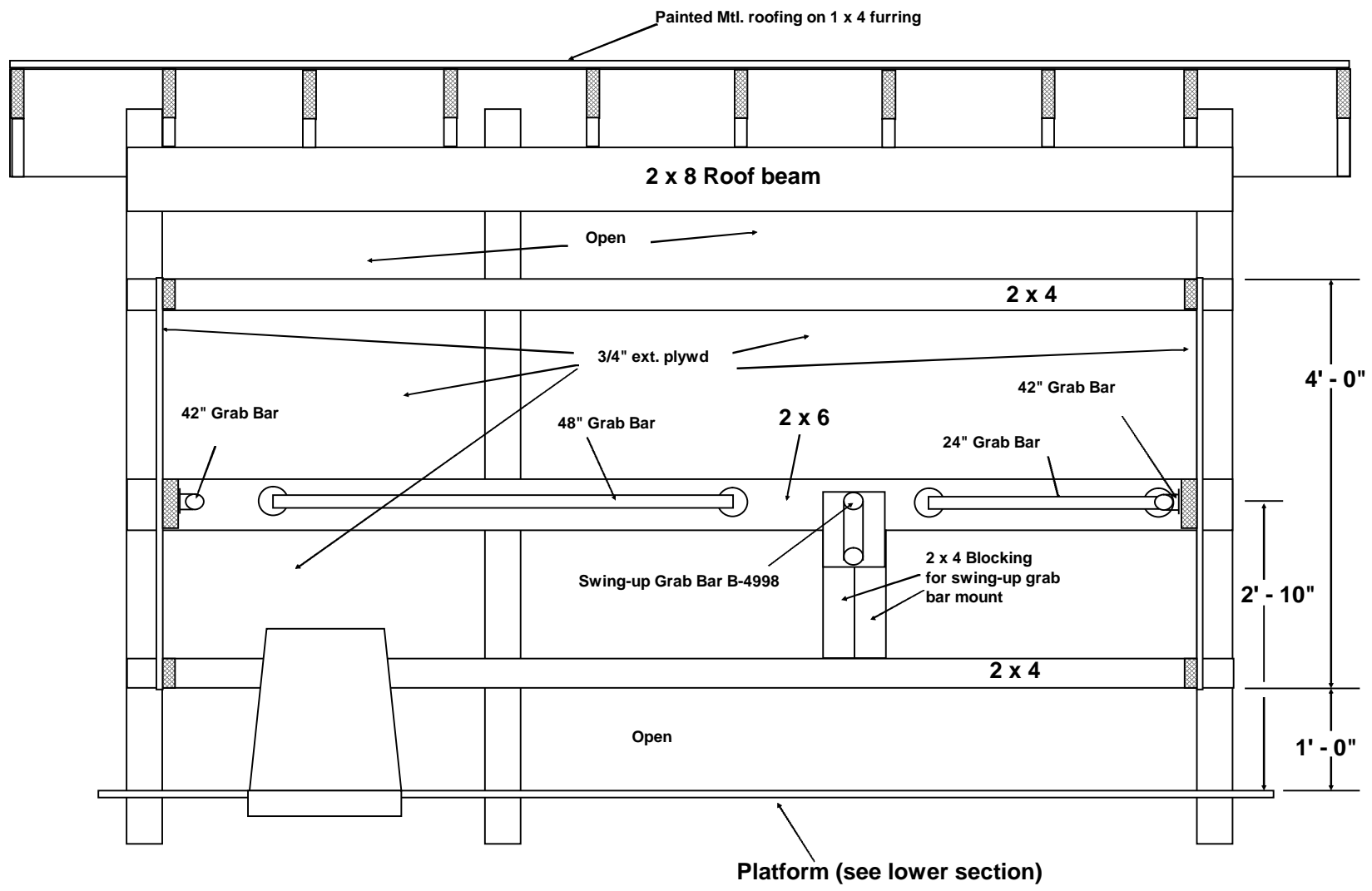


**Roof Framing**



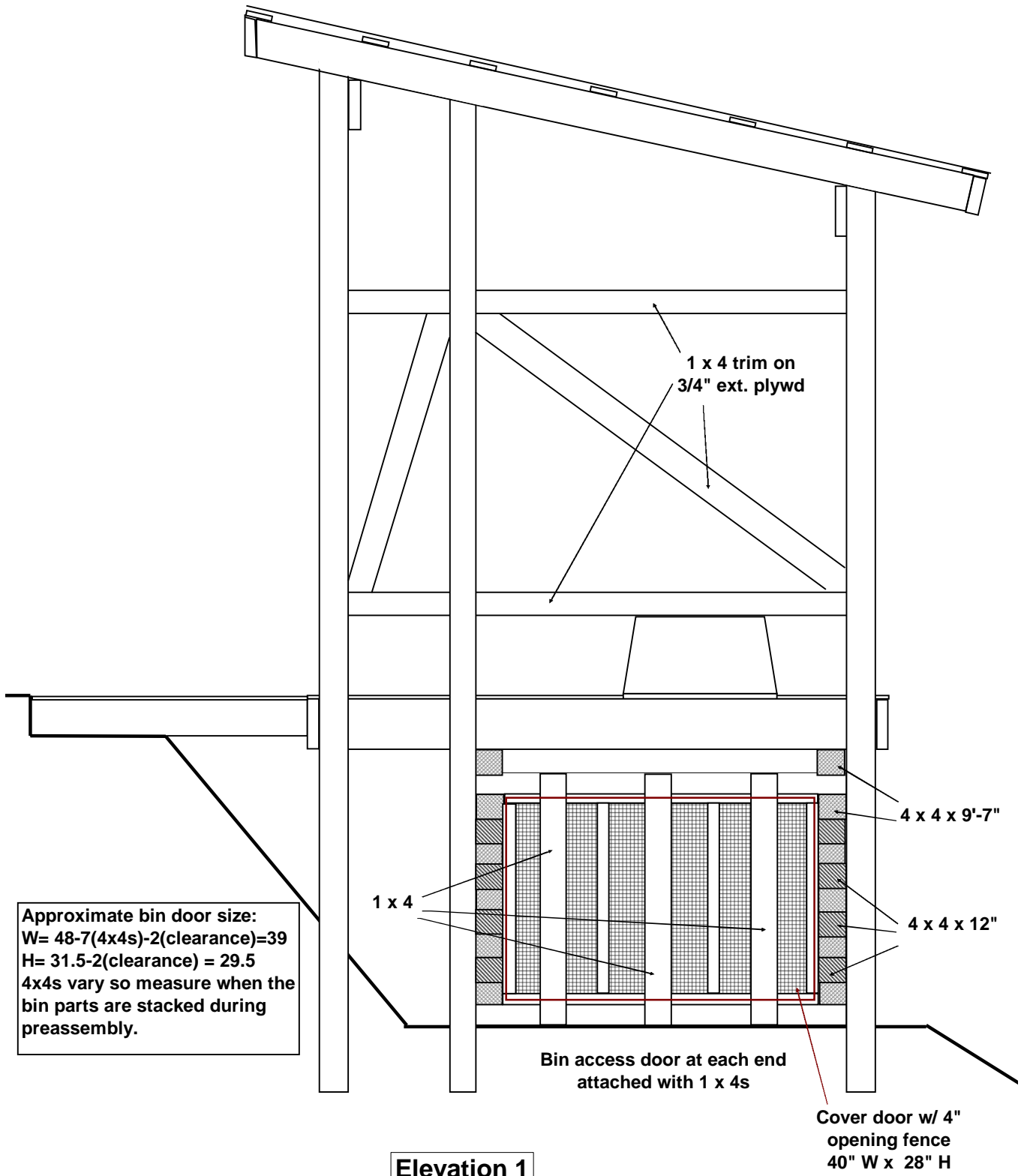
**Upper Section 1**

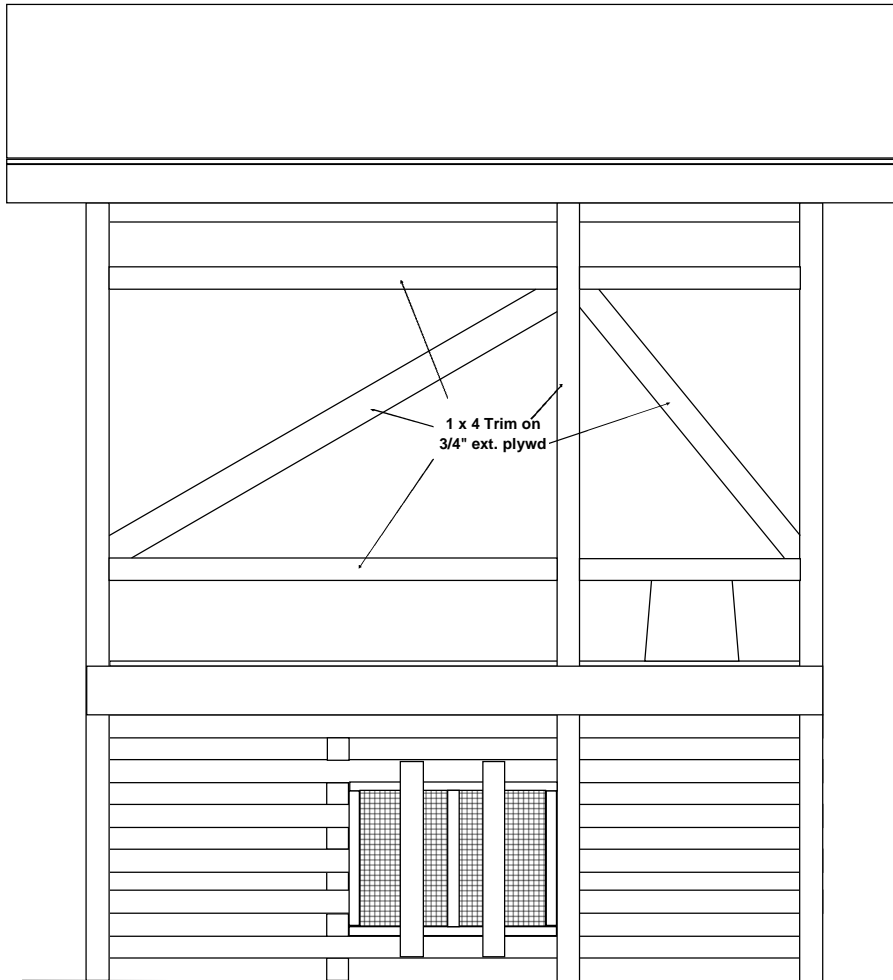
12/12/11: Lowered the roof to show beam bearing heights of 88" sloping to 72"



**Upper Section 2**







Cover bin door w/ 4" opening fence and cover all the rest of front and back with 4" opening fence.

Bin access Door attached with 1 x 4

**Elevation 2**

Approximate bin door size:  
 $W = 36 - 3.5(\text{posts}) - 2(\text{clearance}) = 30.5$   
 $H = 24.5 - 2(\text{clearance}) = 22.5$   
 4x4s vary so measure when the bin parts are stacked during preassembly.