



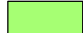

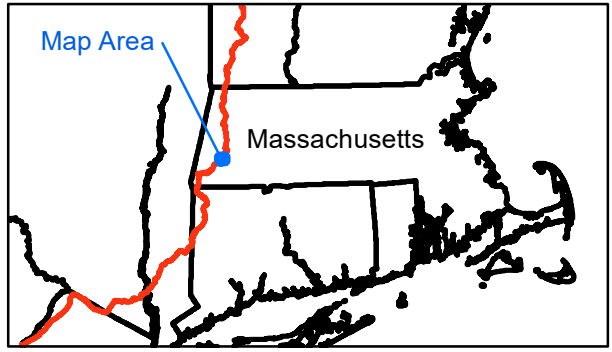


**APPALACHIAN NATIONAL
SCENIC TRAIL**

**JERUSALEM ROAD TO MAIN ROAD
TYRINGHAM, MASSACHUSETTS**

-  SECTION CURRENTLY FLOODED
-  SUGGESTED DETOUR
-  APPALACHIAN TRAIL
-  FEDERAL LAND - NPS
-  STATE LAND
-  CONSERVATION LAND



Produced by the Appalachian Trail GIS Program



Sources: Esri, HERE, Garmin, Intermap, increment P Corp., GEBCO, USGS, FAO, NPS, NRCAN, GeoBase, IGN, Kadaster NL, Ordnance Survey, Esri Japan, METI, Esri China (Hong Kong), (c) OpenStreetMap contributors, and the GIS User Community