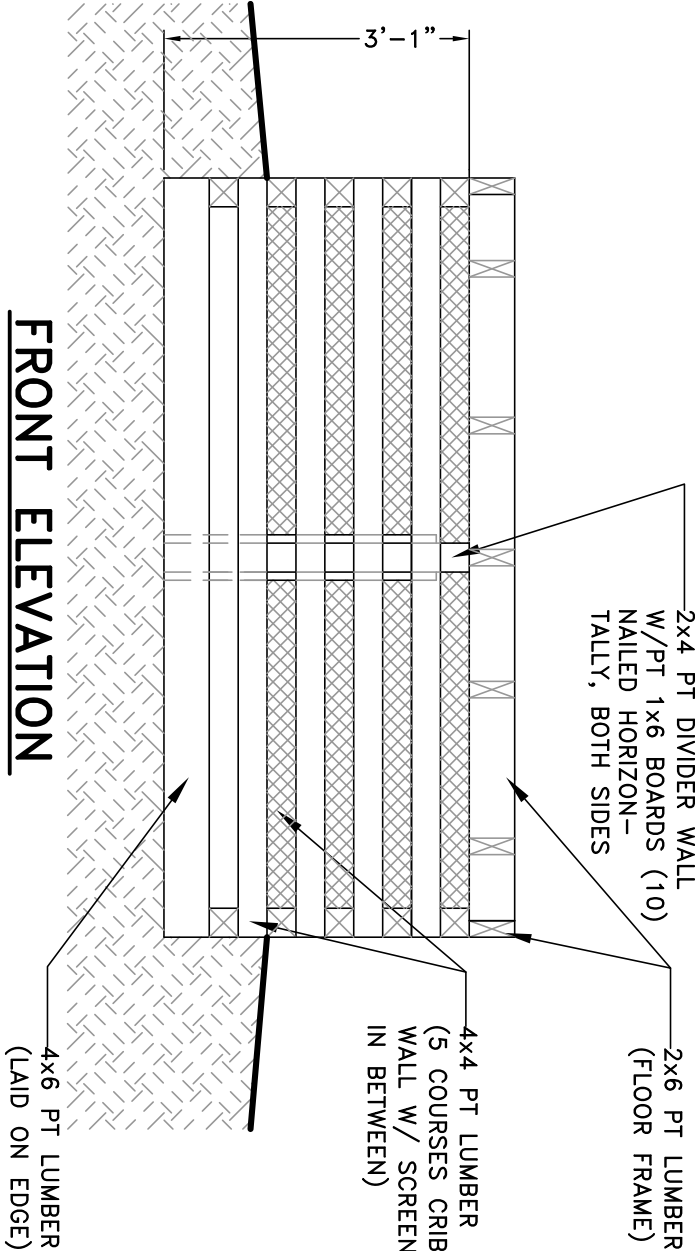


PLAN VIEW

MOLDERING BIN FRAME



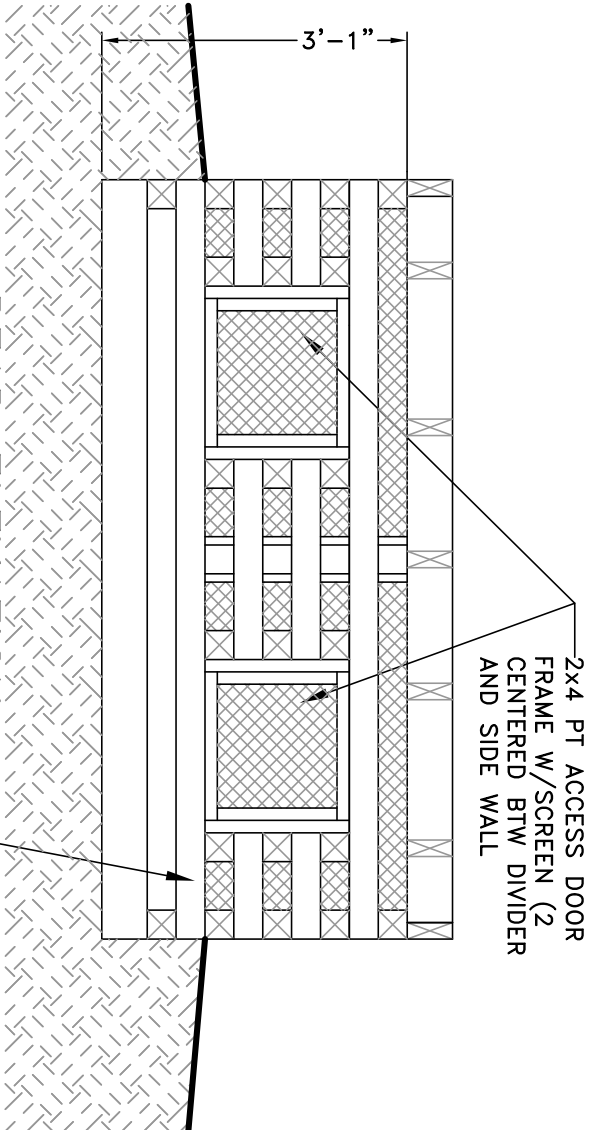
FRONT ELEVATION

MOLDERING BIN

| MOLDERING PRIVY MATERIAL LIST (CRIB BASE) | | | CONSTRUCTION NOTES CONTINUED | | |
|---|----------------|-------------------------|------------------------------|-----------------------|--|
| QTY. | | | QTY. | | |
| 2 | 4 x 6 x 7'-8" | PRESSURE TREATED LUMBER | 1 | OTHER MATERIALS | |
| 2 | 4 x 6 x 7'-1" | | 1 | ROLL OF SCREEN | |
| 18 | 4 x 4 x 7'-8" | | 1 | ROLL OF 1/2" HARDWARE | |
| 2 | 4 x 4 x 7'-1" | | 10 LBS. | CLOTH | |
| 24 | 4 x 4 x 3-1/2" | | 2 LBS. | 6" SCREWS OR NAILS | |
| 8 | 2 x 4 x 8'-0" | | 3 LBS. | 12D GALVANIZED NAILS | |
| 10 | 1 x 6 x 8'-0" | | | 3/4" FENCE STAPLES | |

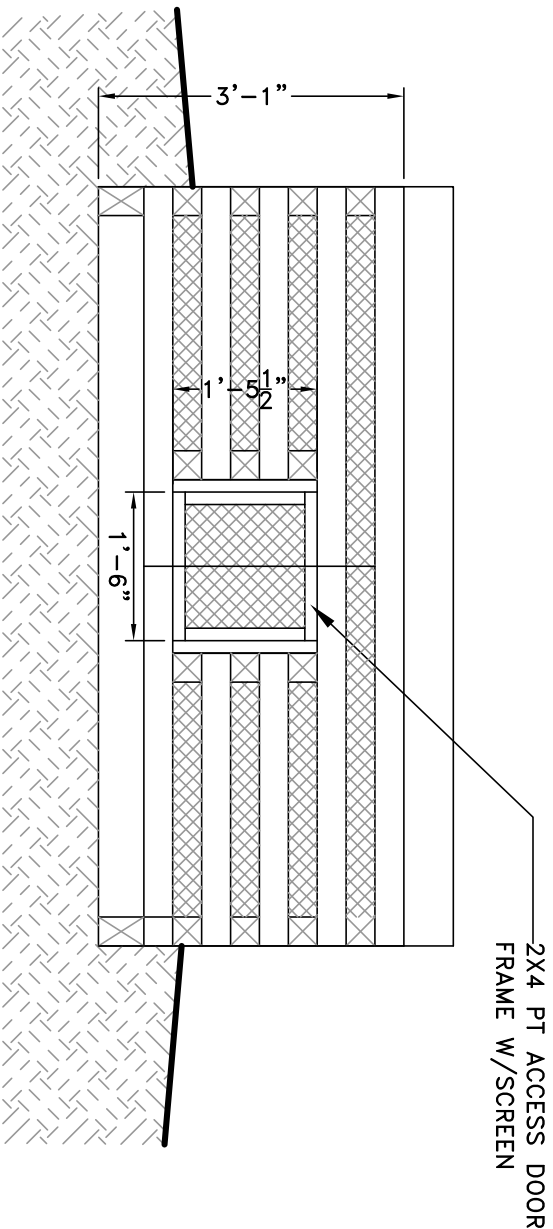
1. BOTTOM (FIRST) COURSE OF TIMBERS SHALL BE 4 x 6 ON EDGE.
2. FIRST AND SECOND COURSE OF CRIB SHALL BE APPROXIMATELY BELOW GROUND LEVEL.
3. FIRST TWO COURSES OF CRIB ARE FOUR SIDED--(2) 4 x 4 x 7'-8" & (2) 4 x 4 x 7'-1" TO MAKE A SQUARE. JOINTS OF 2ND COURSE OFF-SET FROM JOINTS OF 1ST COURSE.

4. REMAINING COURSES OF CRIB SHALL BE TWO PIECES PER COURSE ALTERNATING "LOG CABIN" STYLE TO ALLOW FOR SPACES BETWEEN COURSES.
5. CONSTRUCT ENTIRE CRIB W/O ACCESS OPENINGS. AFTER COMPLETION OF CRIB, CUT ACCESS OPENINGS. USE A LEVEL TO MARK "PLUMB" LINES FOR ACCESS DOOR;INSTALL SPACER BLOCKS 3-1/2"x3-1/2" BETWEEN COURSES ON EDGE OF OPENINGS ALLOWING 1-1/2" FOR 2 x 4 ACCESS DOOR FRAME PIECES AS SHOWN ON PLAN ELEVATIONS.
6. CONSTRUCT DIVIDER WALL WITH PT 2 x 4'S CENTERED ON FRONT AND REAR CRIB WALLS (SEE PLAN). NAIL PT 1 x 6'S HORIZONTALLY FROM GROUND TO TOP OF 9TH COURSE (ENOUGH ROOM TO FOR AIR FLOW).
7. INSTALL 1/2" HARDWARE CLOTH. THEN SCREEN AROUND INSIDE OF CRIB AND ACCESS DOORS BEFORE BEGINNING FLOOR FRAME.



REAR ELEVATION

MOLDERING BIN



SIDE ELEVATION

MOLDERING BIN

NOTES

FOREST SERVICE OUTDOOR RECREATION ACCESSIBILITY GUIDELINES (FSORAG) AND THE FOREST SERVICE TRAIL ACCESS GUIDELINES (FSTAG) WERE USED TO DETERMINE THE STANDARDS AND GUIDELINES FROM WHICH THIS ACCESSIBLE MOLDERING PRIVY WAS DESIGNED.

| | | |
|-----|----------------|------|
| △ | | |
| △ | | |
| △ | | |
| △ | | |
| No. | Revision/Issue | Date |

U.S. DEPARTMENT OF AGRICULTURE

FOREST SERVICE



REGION NINE

Project Name

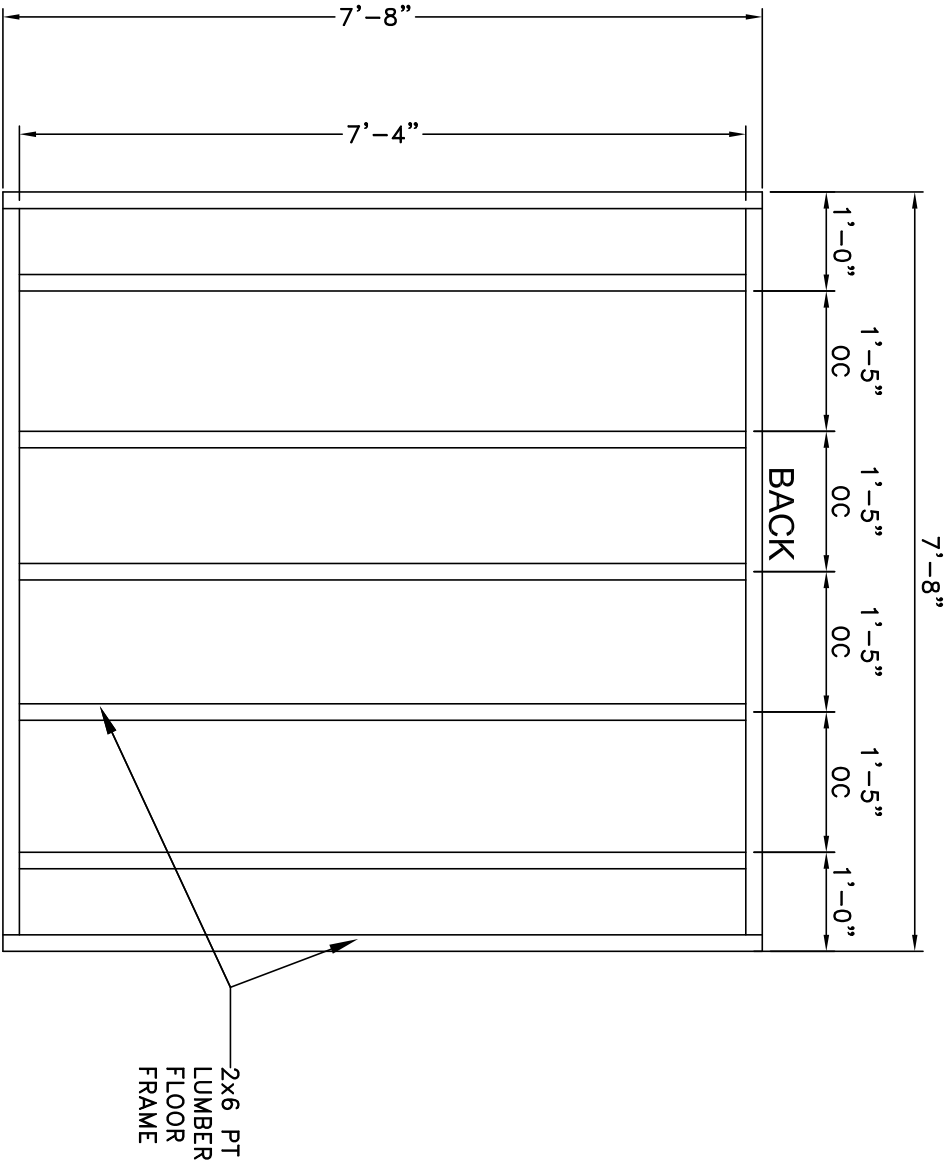
Accessible
Moldering Privy

Designer

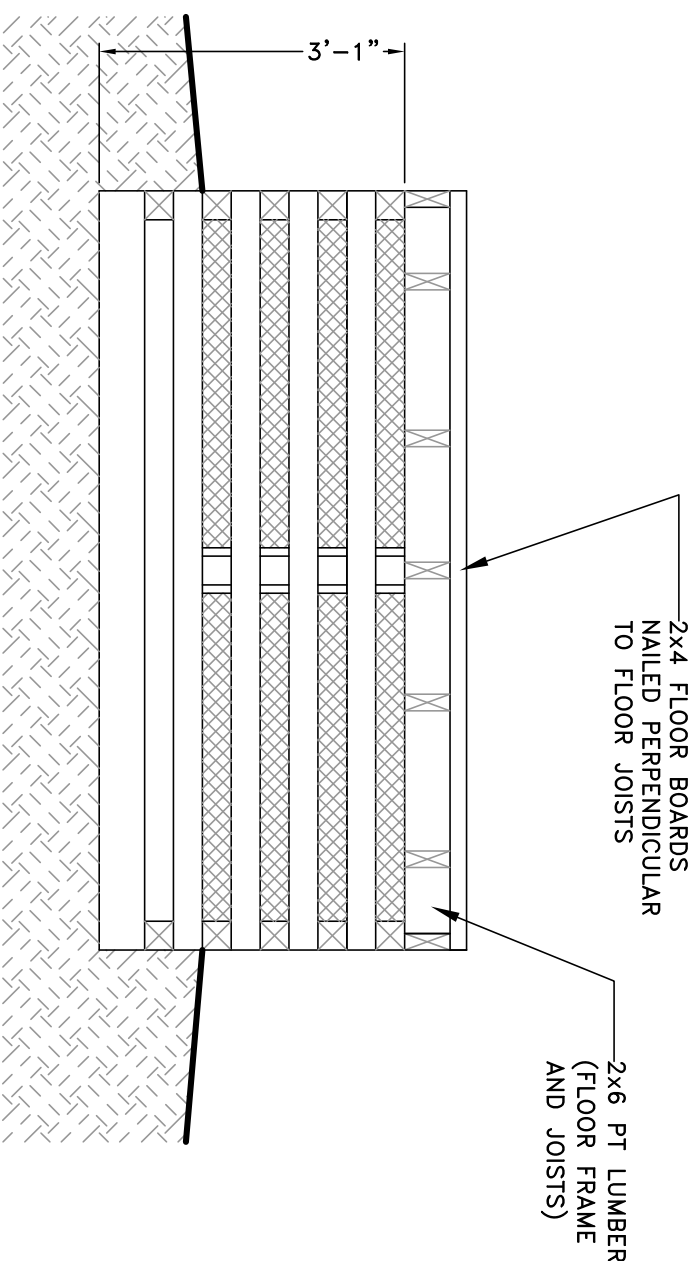
Drawing Title

Moldering Bin

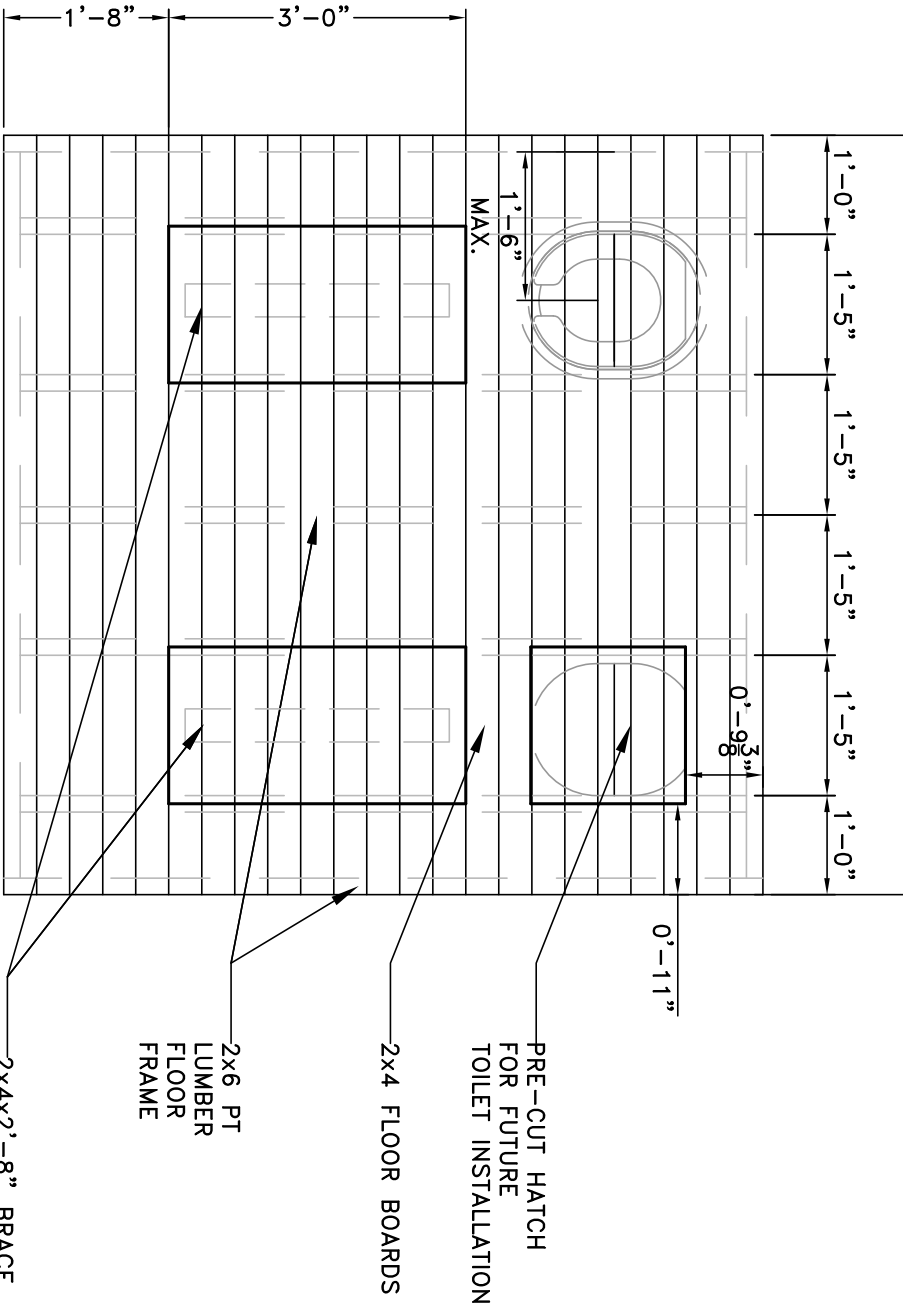
| | | | |
|-----------------|------------|-------------------|--------|
| Drawn | MIEB | Project No. | |
| Checked | | Drawing Sheet No. | |
| CAD Archive No. | | | |
| Date | 12/20/2012 | | |
| Scale | 1/2"=1'-0" | Sheet | 1 of 4 |



FRONT
PLAN VIEW
FLOOR FRAME



FRONT ELEVATION
FLOOR JOISTS & FRAME ON CRIB



FRONT/BACK
PLAN VIEW
FLOOR FRAME

MOLDERING PRIVY MATERIAL LIST (FLOOR FRAME AND FLOOR)

| QTY. | ROUGH LUMBER |
|-----------------|------------------------------------|
| 9 | 2 x 6 x 8'-0" |
| 23 | 2 x 4 x 8'-0" |
| OTHER MATERIALS | |
| 5 LBS. | 16D GALVANIZED NAILS (FLOOR FRAME) |
| 20 LBS. | 16D GALVANIZED NAILS (FLOOR) |

CONSTRUCTION NOTES

1. INSTALL 2 x 6 JOISTS PERPENDICULAR TO DIRECTION OF ENTRY AS SHOWN IN PLAN VIEW.
2. VERIFY DIMENSIONS OF TOILET RISER BEFORE CUTTING FLOORING. CENTER OF TOILET RISER SHALL BE 16"-18" MAX. MEASURED FROM EDGE OF INSIDE WALL. TOILET OPENING IN FLOOR SHALL BE CENTERED BETWEEN JOISTS.
3. INSTALL FLOOR BOARDS.
4. FLOOR HATCHES SHALL BE INSTALLED W/EDGES CENTERED ON JOISTS.

NOTES

FOREST SERVICE OUTDOOR RECREATION ACCESSIBILITY GUIDELINES (FSORAG) AND THE FOREST SERVICE TRAIL ACCESS GUIDELINES (FSTAG) WERE USED TO DETERMINE THE STANDARDS AND GUIDELINES FROM WHICH THIS ACCESSIBLE MOLDERING PRIVY WAS DESIGNED.

| | | |
|-----|----------------|------|
| △ | | |
| △ | | |
| △ | | |
| △ | | |
| No. | Revision/Issue | Date |

U.S. DEPARTMENT OF AGRICULTURE

FOREST SERVICE



Project Name

Accessible
Moldering Privy

Designer

Drawing Title

FLOOR FRAMING

| | | | |
|-----------------|------------|-------------------|--------|
| Drawn | MIEB | Project No. | |
| Checked | | Drawing Sheet No. | |
| CAD Archive No. | | | |
| Date | 12/20/2012 | | |
| Scale | 1/2"=1'-0" | Sheet | 2 of 4 |

NOTES

FOREST SERVICE OUTDOOR RECREATION ACCESSIBILITY GUIDELINES (FSORAG) AND THE FOREST SERVICE TRAIL ACCESS GUIDELINES (FSTAG) WERE USED TO DETERMINE THE STANDARDS AND GUIDELINES FROM WHICH THIS ACCESSIBLE MOLDERING PRIVY WAS DESIGNED.

| | | |
|-----|----------------|------|
| △ | | |
| △ | | |
| △ | | |
| △ | | |
| No. | Revision/Issue | Date |

U.S. DEPARTMENT OF AGRICULTURE
FOREST SERVICE

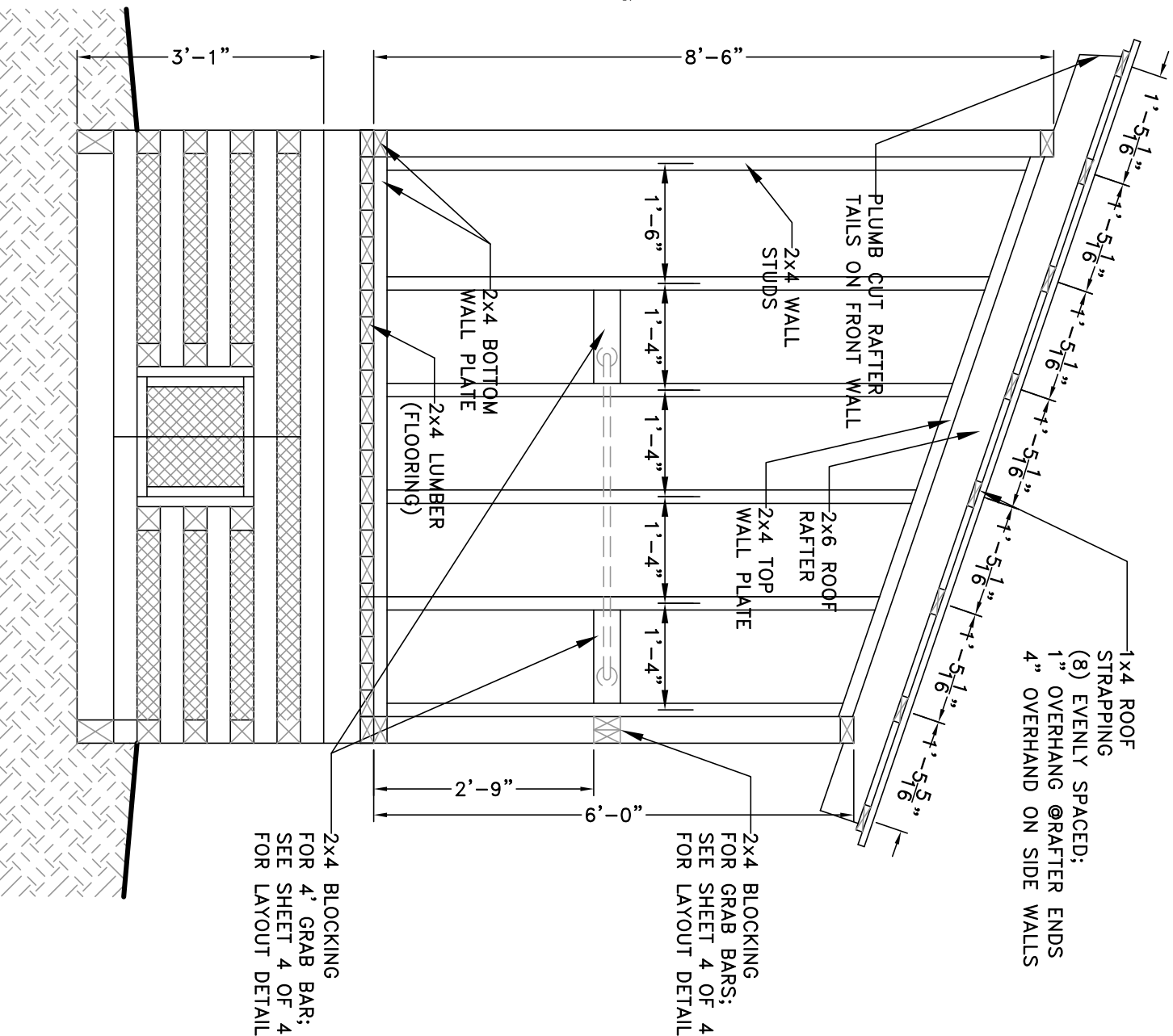


Project Name
Accessible
Moldering Privy

Designer

Drawing Title
WALL & ROOF FRAMING

| Drawn | Project No. |
|-----------------|-------------------|
| MEB | |
| Checked | Drawing Sheet No. |
| CAD Archive No. | |
| Date | |
| 12/20/2012 | |
| Scale | Sheet 3 of 4 |
| 1/2"=1'-0" | |

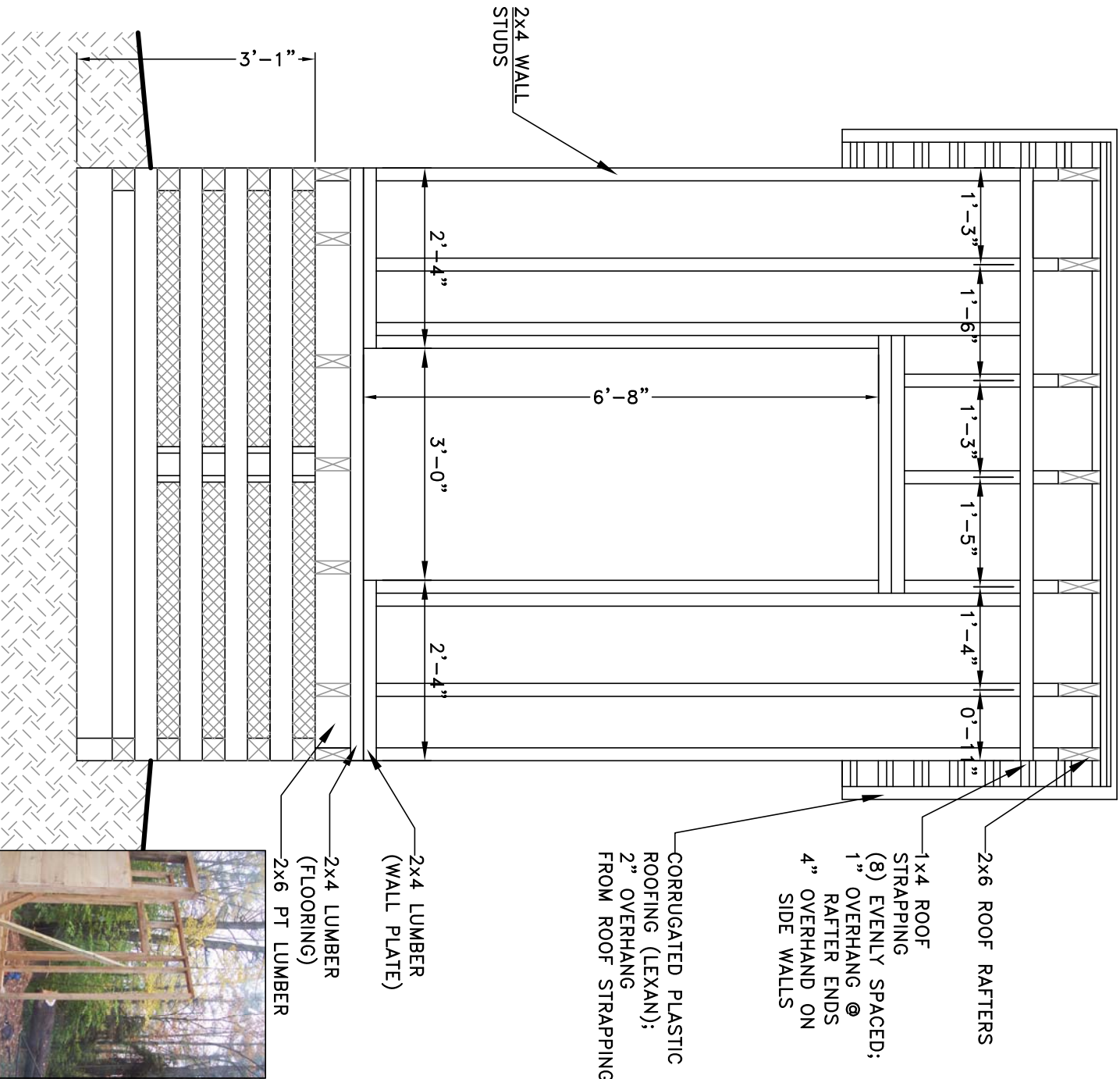


SIDE ELEVATION WALL/ROOF FRAMING



FRONT/BACK WALL BRACING

FRONT ELEVATION WALL / ROOF FRAMING



MOLDERING PRIVY MATERIALS LIST (WALL / ROOF FRAMING)

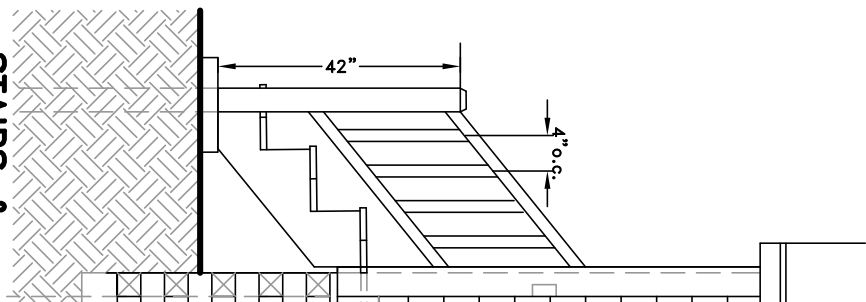
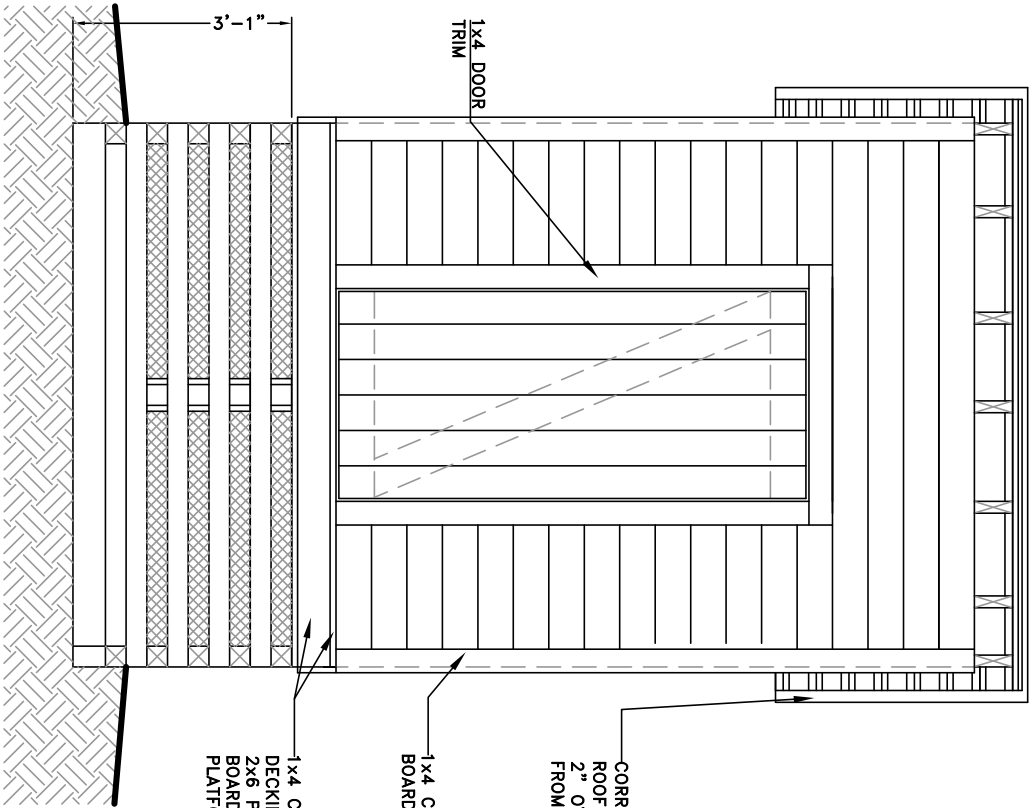
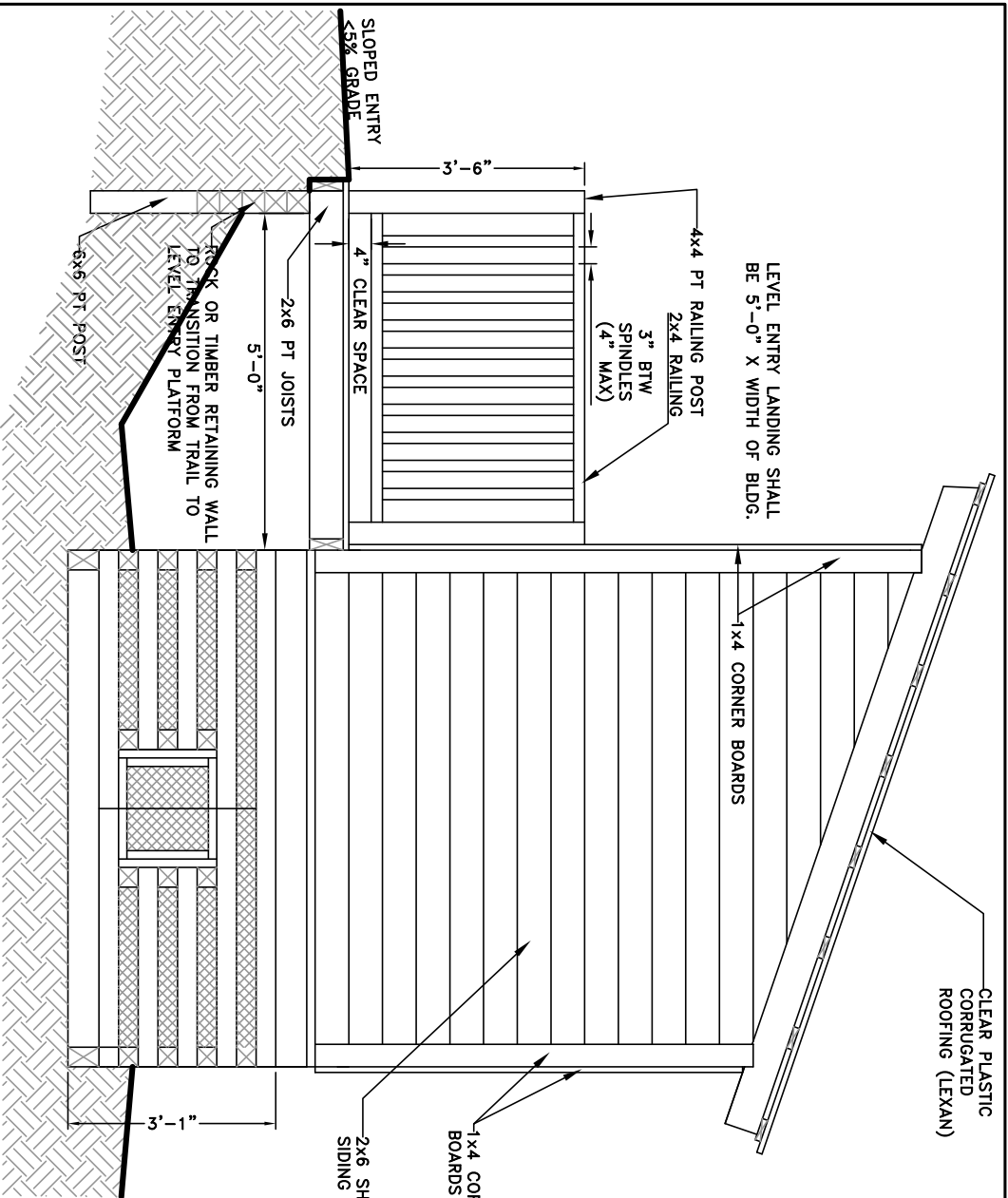
| QTY. | ROUGH LUMBER--WALL FRAMES | QTY. | ROUGH LUMBER--ROOF FRAMES |
|------|---------------------------|------|---------------------------|
| 8 | 2 x 4 x 10'-0" | 7 | 2 x 6 x 12'-0" |
| 29 | 2 x 4 x 8'-0" | 8 | 1 x 4 x 10'-0" |

| OTHER MATERIALS | | OTHER MATERIALS | |
|-----------------|------------------------------------|-----------------|--|
| 10 LBS. | 16D GALVANIZED NAILS (WALL FRAMES) | 10 LBS. | 16D GALVANIZED NAILS (ROOF FRAMES) |
| 1 | 6" STAINLESS STEEL GRAB BAR OR | 2 LBS. | 10D GALVANIZED NAILS |
| | (2) 36" STAINLESS STEEL GRAB BARS | 5 LBS. | 1-1/2" ROOFING SCREWS |
| 2 | 42" STAINLESS STEEL GRAB BARS | 12' | CLEAR CORRUGATED PLASTIC ROOFING (LEXAN) |
| 1 | TOILET RISER | | (4) 3' WIDE LENGTHS OR |
| | | | (6) 2' WIDE LENGTHS |

CONSTRUCTION NOTES*

1. ASSEMBLE & RAISE BACK WALL ON FLOOR DECK. SECURE WITH 2 BLOCKS OF WOOD SCREWED TO FLOOR AND DIAGONAL BRACE FROM EACH BLOCK TO WALL. USE LEVEL TO PLUMB WALL WHILE FASTENING BRACE. SEE INSET PICTURE ABOVE.
2. ASSEMBLE & RAISE FRONT WALL ON FLOOR DECK, CENTERING DOOR OPENING ON CONTINUOUS WALL PLATE. RAISE WALL AND SECURE AS IN STEP 1. AT DOOR OPENING, REMOVE WALL PLATE SECTION SO THAT DOOR CAN SWING FREELY.
3. FRONT WALL AND BACK WALL MUST BE PLUMB IN TWO DIRECTIONS BEFORE PROCEEDING TO SIDEWALLS.
4. FOR SIDEWALLS, USE SLIDING "IT" BEVEL (OR OTHER ANGLE FINDING TOOL) TO ESTABLISH ANGLE TO CUT TOP WALL PLATES. ANGLE WILL BE SAME FOR ALL 4 ANGLE CUTS IN TOP PLATES. IF SLIGHT VARIATIONS OCCUR, "SPLIT THE DIFFERENCE" TO FIND SAME ANGLE FOR ALL 4 CUTS.
5. INSTALL TOP WALL PLATES WITH SCREWS AND BOTTOM WALL PLATES WITH NAILS.
6. INSTALL STUDS PLUMB AND 16" OC STARTING AT THE FRONT (TALLEST) AND WORKING TO BACK.
7. FASTEN 2x4 BLOCKS BETWEEN STUDS FOR GRAB BARS (SEE PLANS). LOCATE GRAB BARS AS SHOWN IN PLAN. INSTALL SIDING AND CORNER BOARDS NEXT--SEE SHEET 4 OF 4.
8. TO MAKE RAFTERS, SQUARE EACH 2x6 RAFTER AT ONE END. TAKE ONE RAFTER, MEASURE AND MARK 12" ON ONE EDGE FROM SQUARED END. HOLD RAFTER AGAINST BUILDING WITH 12" MARK EVEN WITH BACKSIDE OF BACK WALL AND BOTTOM OF RAFTER EVEN WITH TOP FRONT EDGE OF BACK WALL AND FRONT WALL TOP PLATES. SCREW RAFTER TO ONE SIDE OF BUILDING. CAREFULLY TRACE TOP WALL PLATES ONTO RAFTER. UNSCREW AND REMOVE RAFTER. MEASURE AND MARK 12" FROM FRONT WALL MARK ON BOTTOM EDGE OF RAFTER. USE ANGLE FINDER TO MARK PLUMB LINE FROM 12" MARK. ANGLE SHOULD BE SAME AS ANGLE OF TOP WALL SIDE PLATES. CUT ALL PENCIL LINES ON RAFTER. **THIS IS YOUR PATTERN!** USE THIS RAFTER TO TRACE ALL CUTS ON ALL RAFTERS BEFORE CUTTING NOTCHES INTO RAFTERS.
9. INSTALL RAFTERS AS SHOWN ON PLANS
10. INSTALL ROOF STRAPPING PERPENDICULAR TO RAFTERS, EVENLY SPACED, WITH 1" OVERHANG ON RAFTER ENDS AND 4" OVERHANG ON SIDE WALLS.

*SEE SHEET 4 OF 4 FOR SIDING AND DOOR NOTES



MOLDERING PRIVY MATERIALS LIST (SIDING/CORNER BOARDS/DOOR)

| QTY. | ROUGH LUMBER |
|------|--------------------------------|
| 75 | 1 x 6 x 8'-0" SHIPLAP SIDING |
| 8 | 1 x 6 x 8'-0" (DOOR) |
| 3 | 1 x 4 x 8'-0" (DOOR TRIM) |
| 4 | 1 x 4 x 10'-0" (CORNER BOARDS) |
| 4 | 1 x 4 x 8'-0" (CORNER BOARDS) |

OTHER MATERIALS

| | |
|---------|---------------------------------------|
| 30 LBS. | 10D GALVANIZED NAILS (SIDING) |
| 1 LB. | 10D GALVANIZED NAILS (CORNER BOARDS) |
| 1 LB. | 1-1/2" WOOD SCREWS |
| 2 | HINGES W/SCREWS |
| 2 | LATCHES, CLOSURES |

| QTY. | LEVEL ENTRY PLATFORM |
|--------|-------------------------------------|
| 2 | PRESSURE TREATED LUMBER |
| 2 | 2 x 6 x 8'-0" (LEDGER BOARDS) |
| 4 | 2 x 6 x 10'-0" (JOISTS) |
| 1 | 6 x 6 x 8'-0" (DECK POSTS) |
| 4 | 4 x 4 x 3'-6" (RAILING POSTS) |
| 4 | 2 x 4 x 5'-0" (TOP AND BOTTOM RAIL) |
| 16 +/- | 2 x 2 x 2'-10" (SPINDLES) |

OTHER MATERIALS

| | |
|---------|---------------------------------------|
| 30 LBS. | 10D GALVANIZED NAILS (SIDING) |
| 1 LB. | 10D GALVANIZED NAILS (CORNER BOARDS) |
| 1 LB. | 1-1/2" WOOD SCREWS |
| 2 | HINGES W/SCREWS |
| 2 | LATCHES, CLOSURES |

CONSTRUCTION NOTES

SIDING AND CORNER BOARDS

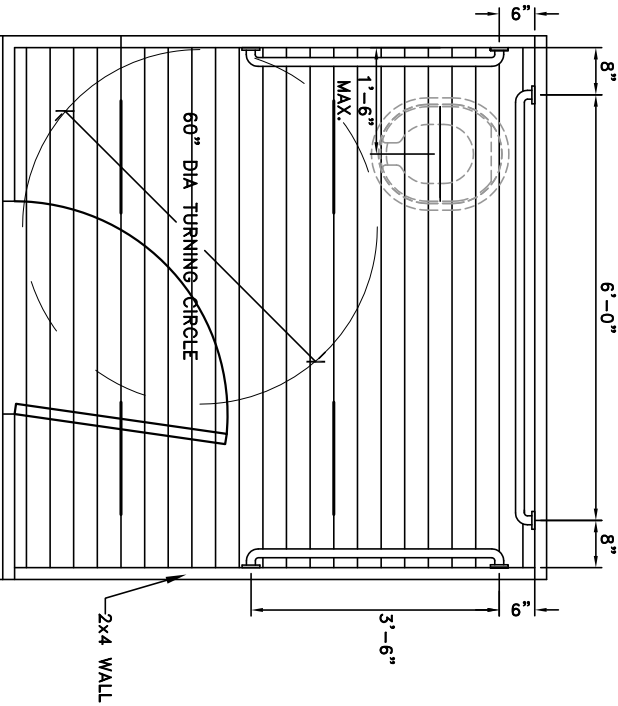
1. INSTALL SIDING SO THAT BOTTOM EDGE OF FIRST SIDING BOARD IS 1" BELOW BOTTOM EDGE OF FLOOR BOARDS (COVERING ENDS).
2. INSTALL SIDING ON FRONT WALL EVEN WITH TOP OF FLOOR BOARDS TO ALLOW FOR INSTALLATION OF LEDGER BOARD AND DECKING FOR LEVEL ENTRY DECK.
3. CHECK FOR LEVEL EACH SIDING COURSE; MAKE MINOR ADJUSTMENTS ACCORDINGLY EVERY FOUR OR FIVE COURSES.
4. ENDS OF SIDING BOARDS AT CORNERS NEED NOT BE PERFECT. THEY WILL BE COVERED WITH CORNER BOARDS.
5. INSTALL VERTICAL 1x4 CORNER BOARDS AT EACH CORNER OF BUILDING TO PROTECT ENDS OF SIDING BOARDS.

DOOR

1. CONSTRUCT DOOR WITH 6 VERTICAL 1x6 BOARDS FASTENED TOGETHER WITH HORIZONTAL 1x6 BOARDS AT TOP AND BOTTOM AND A 1x6 BOARD FASTENED DIAGONALLY FROM TOP CORNER TO BOTTOM CORNER. TOP, BOTTOM AND DIAGONAL BOARDS SHOULD BE INSTALLED ON INSIDE OF DOOR WITH 1-1/2" SCREWS.
2. BUILD DOOR APPROXIMATELY 1/2" SMALLER THAN DOOR OPENING TO PREVENT DOOR FROM JAMMING.
3. INSTALL DOOR WITH EQUAL SPACING AROUND EDGES BY INSERTING SMALL SHIMS UNDER DOOR WHILE FASTENING.

SIDE ELEVATION SIDING/CORNER BOARDS LEVEL ENTRY PLATFORM

FRONT ELEVATION WALL /ROOF FRAMING

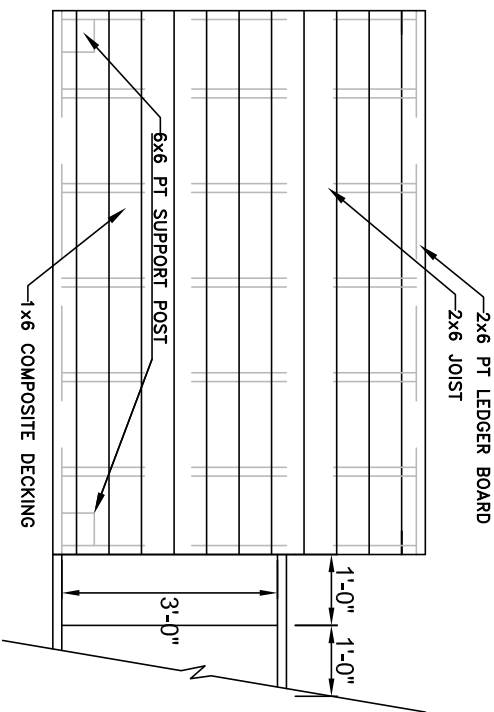


FRONT PLAN VIEW TOILET RISER & GRAB BARS

PLAN VIEW

LEVEL ENTRY PLATFORM

FOR ACCESSIBILITY TOILET BUILDING SHALL BE CONSTRUCTED WITH A LEVEL ENTRY PLATFORM AND SLOPED PATH TO PLATFORM. PLACE BUILDING ACCORDINGLY TO ACCOMMODATE SPECIFIC SITE. IF NECESSARY, ADD STEPS TO ONE SIDE OF PLATFORM.



NOTES

FOREST SERVICE OUTDOOR RECREATION ACCESSIBILITY GUIDELINES (FSORAG) AND THE FOREST SERVICE TRAIL ACCESS GUIDELINES (FSTAG) WERE USED TO DETERMINE THE STANDARDS AND GUIDELINES FROM WHICH THIS ACCESSIBLE MOLDERING PRIVY WAS DESIGNED.

| | | |
|-----|----------------|------|
| Δ | | |
| Δ | | |
| Δ | | |
| Δ | | |
| No. | Revision/Issue | Date |

U.S. DEPARTMENT OF AGRICULTURE

FOREST SERVICE



Project Name

Accessible
Moldering Privy

Designer

Drawing Title

SIDING / MISC.DETAILS

| | | |
|-----------------|------------|-------------------|
| Drawn | MEB | Project No. |
| Checked | | Drawing Sheet No. |
| CAD Archive No. | | |
| Date | 12/20/2012 | Sheet 4 of 4 |
| Scale | 3/8"=1'-0" | |