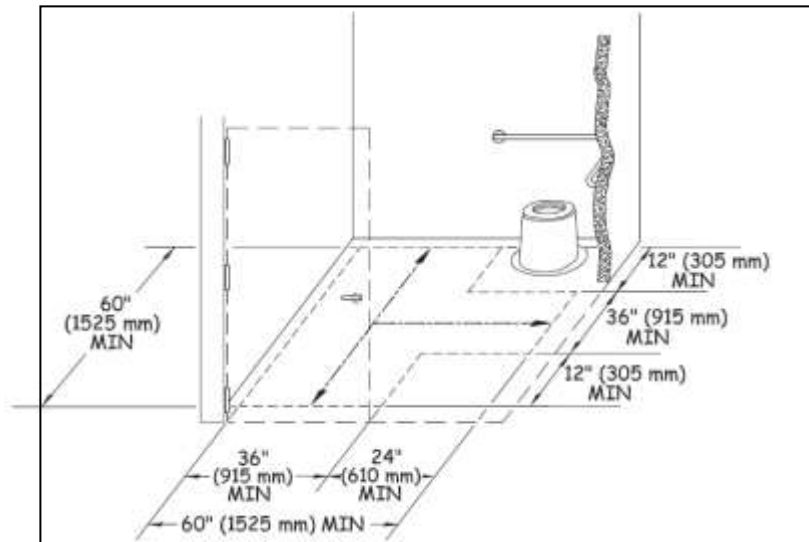


## USFS Outdoor Recreation Accessibility Guidelines (FSORAG)

Available at <http://www.fs.fed.us/recreation/programs/accessibility>

### 5.3 Pit Toilets

5.3.1 General. Pit toilets may only be provided in FS recreation sites with a *Recreation Site Development Scale* level of 2 or less or at remote cabin locations. All pit toilets shall comply with section 5.3 and be connected to an ORAR complying with section 2.0. Where pit toilets are constructed in sites that are not accessed by motor vehicles, the pit toilet and all constructed features in the site shall be connected by trail segments complying with the FSTAG.



5.3.2 Turning Space and Clear Floor or Ground Space. Turning space and clear floor or ground space complying with 5.3 shall be provided at pit toilets.

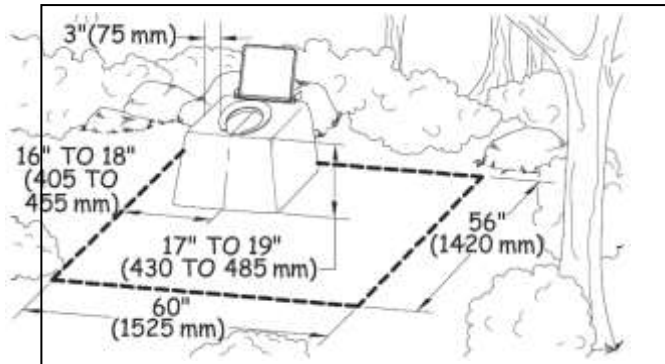
**5.3.2.1 Size.** The clear floor or ground space shall be 60 inches (1525 mm) wide minimum measured parallel with the back of the pit toilet, and 56 inches (1420 mm) deep minimum measured parallel to the sides of the pit toilet. The turning space shall be at least 60 inches (1,525 millimeters) in diameter or T-shaped with a minimum 60- by 36-inch (1,525 by 915 millimeter) arm and a minimum 36-inch (915 millimeter) -wide by 24-inch (610 millimeter) -long base. The turning space and clear floor or ground space may overlap.

**5.3.2.2 Surface.** The surface of the turning space and clear floor or ground space shall be firm and stable.

**5.3.2.3 Slope.** The slope of the turning space and clear floor or ground space surface shall not be steeper than 1:48 (2 percent) in all directions.

**Exception:** When the surface is not paved or is not elevated above the natural ground, slopes not steeper than 1:33 (3 percent) shall be permitted where necessary for drainage.

5.3.3 Seats. Pit toilet seats shall comply with 5.3.3



5.3.3.1 Height. The total height of the toilet seat on the riser for a pit toilet shall be between 17 inches (430 mm) and 19 inches (485 mm) above the floor or ground surface.

**5.3.3.2 Location Where Walls Provided.** Where walls or partitions are provided, the seat shall be positioned with a wall or partition to the rear and to one side of the seat for a left-hand or right-hand approach. The back of the riser shall be flush against the back wall. The centerline of the seat shall be 16 inches (405 mm) minimum to 18 inches (455 mm) maximum from the side wall or partition.

**5.3.3.3 Location Where Walls Not Provided.** Where walls or partitions are not provided, the seat shall be positioned in a corner of the clear floor or ground space required by 5.3.2 for a left-hand or right-hand approach. The back of the seat shall be flush against the perimeter of the clear floor or ground space.

**5.3.4 Grab Bars.** Where walls or partitions are provided, grab bars complying with ABAAS section 604.5 shall be provided.

**Exception:** Where the walls or partitions cannot support the force specified in ABAAS section 609.8, grab bars shall not be installed. In such cases, the riser shall have vertical or nearly vertical sides and a flat area on each side of the seat that is about 3 inches (75 millimeters) wide.

**5.3.5 Doors.** Where provided, doors shall comply with ABAAS section 404. The door shall not swing into or otherwise obstruct the clear floor or ground space required by 5.3.2.1.

**5.3.6 Entrance.** The entrance to the toilet shall be level with the surrounding surface.

**Exception:** Where bedrock, perma-frost or other environmental conditions prohibit a level entry or the toilet design (such as a composting toilet) necessitates a raised toilet structure, a sloped entry complying with the FSTAG provisions for a trail may connect the toilet entrance with the trail or ORAR. A 60

inch by 60 inch (1,220 millimeters by 1,220 millimeters) level landing must be provided outside the door to the toilet. Sloped entries do not require handrails.