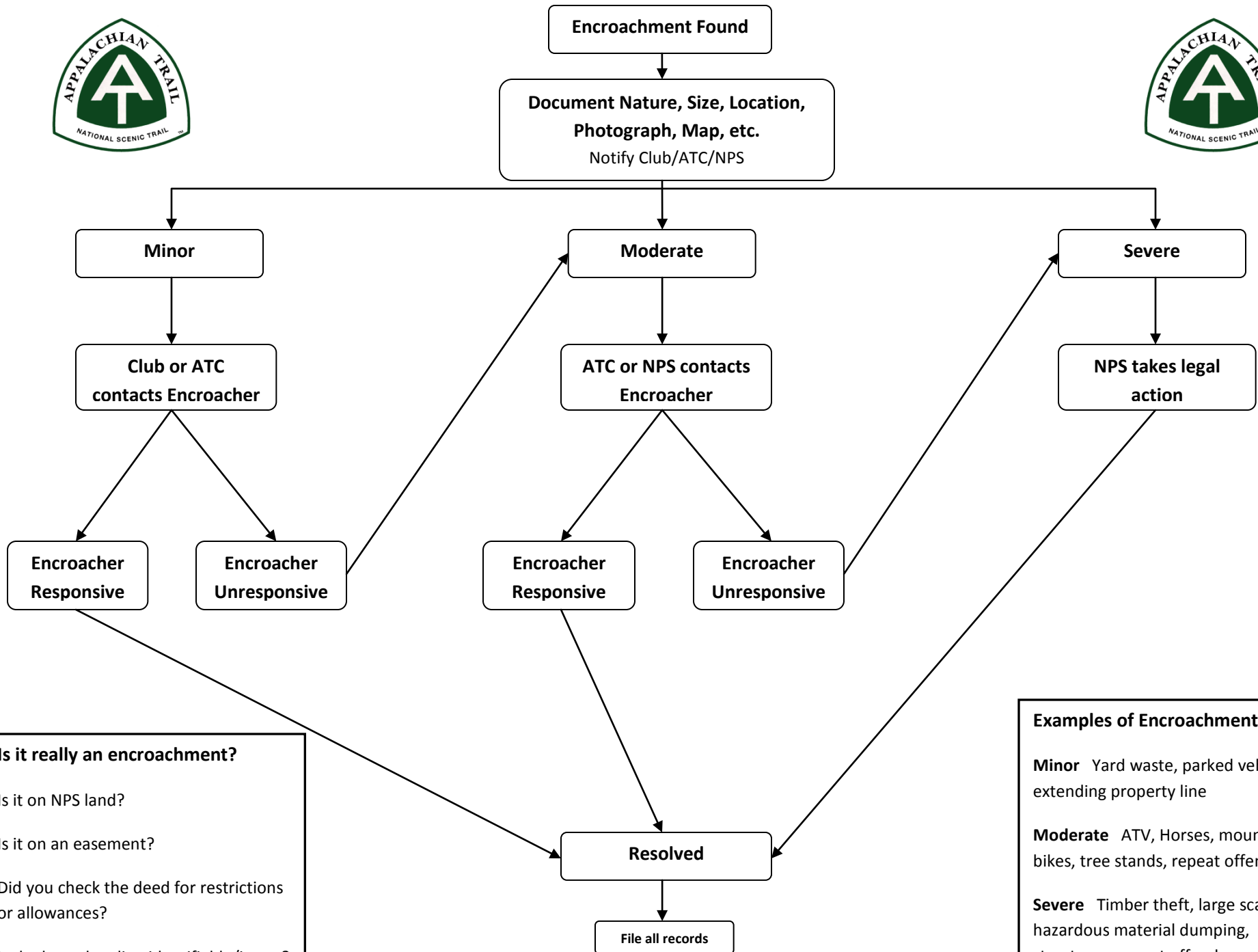


# ENCROACHMENT FLOW CHART

v. 10/2011



**Is it really an encroachment?**

- Is it on NPS land?
- Is it on an easement?
- Did you check the deed for restrictions or allowances?
- Is the boundary line identifiable/intact?

**Examples of Encroachment Type**

**Minor** Yard waste, parked vehicles, extending property line

**Moderate** ATV, Horses, mountain bikes, tree stands, repeat offenders

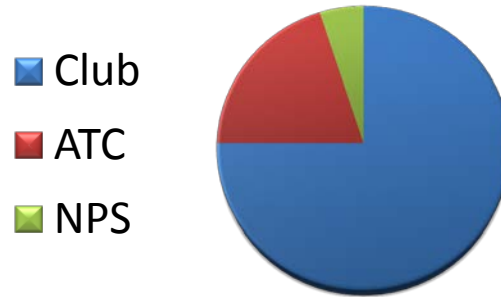
**Severe** Timber theft, large scale or hazardous material dumping, structures, repeat offenders

# Encroachment Checklist

- Is it located on NPS land?
- Is it fee simple or on an easement?
- If an easement, what are the restrictions/retained rights?
- Is this a repeat encroachment/offender?

## Partner Involvement

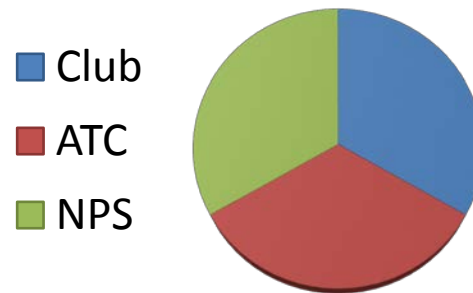
### Minor Encroachment



## Examples

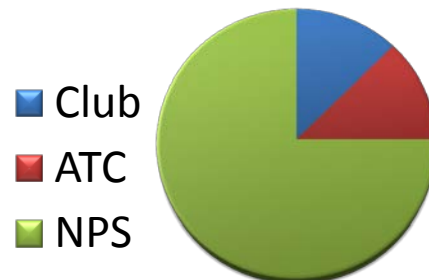
- Yard Waste
- Parked Vehicles
- Extended Property Lines
- Tree Stands (abandoned)

### Moderate Encroachment



- ATV use/trails
- Horse use/trails
- Tree Stands (associated with land owner)
- Repeat Offenders

### Severe Encroachment



- Timber theft or clearing
- Large scale dumping
- Hazardous material dumping
- Structures
- Repeat Offenders